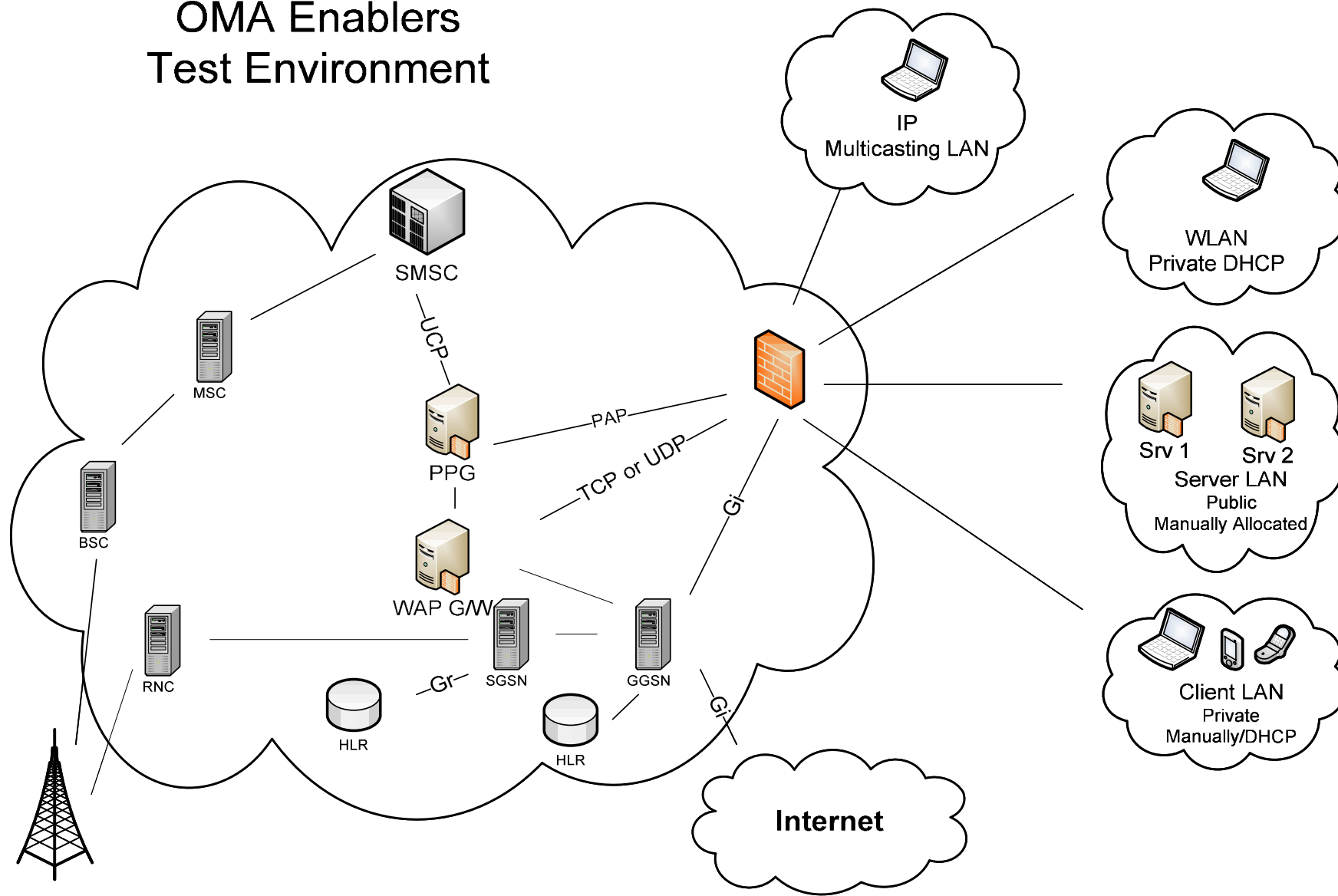


TestFest-22 Result Analysis

DM v1.2

Approved Enabler

OMA Enablers Test Environment



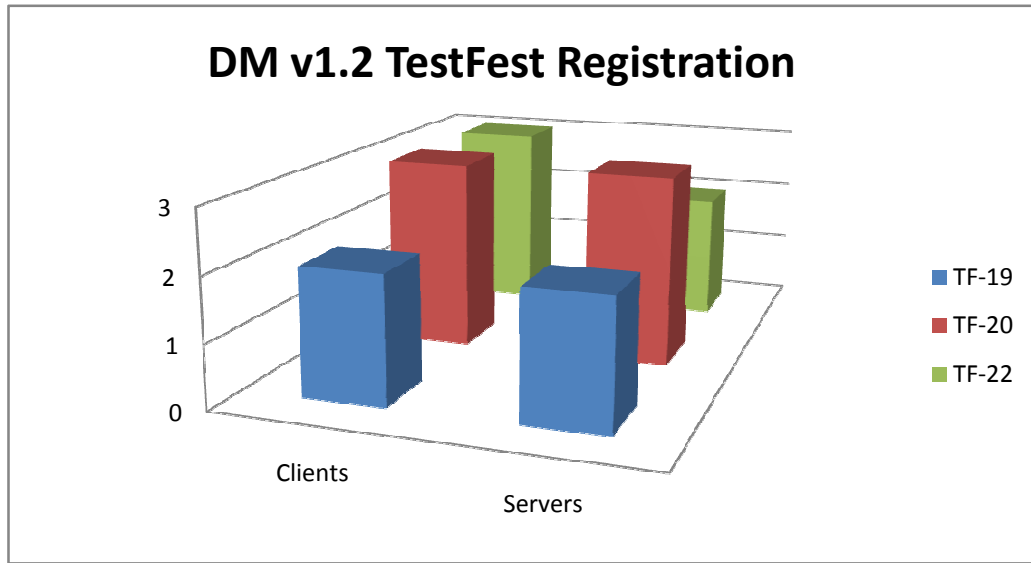
DM v1.2 TestFest Participation

	Clients	Servers
TF-19	2	2
TF-20	3	3
TF-22	3	2

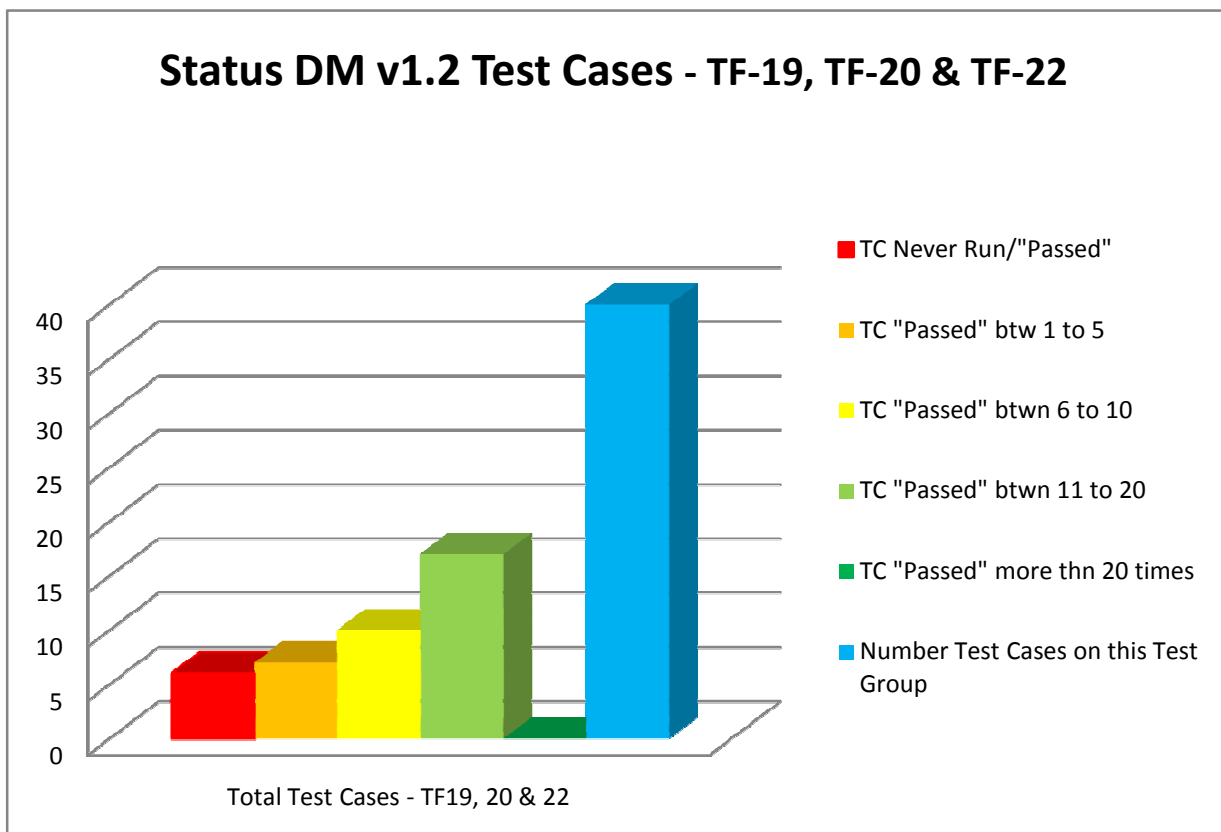
Status of DM v1.2 Test Cases per Test Group - TF-19, TF-20 & TF-22

	TC Never Run/"Passed"	TC "Passed" btw 1 to 5	TC "Passed" btwn 6 to 10	TC "Passed" btwn 11 to 20	TC "Passed" more thn 20 times	Number Test Cases on this Test Group
MD5 Authentication	0	0	0	2	0	2
GET Command	0	0	0	4	0	4
REPLACE Command	0	0	0	1	0	1
ACL Behaviour	0	0	0	1	0	1
Error Handling	0	0	0	1	0	1
HMAC Authentication	0	0	2	0	0	2
Large Object	0	0	1	0	0	1
Notification	0	0	1	0	0	1
Server - Bootstrap - CP Profile	0	0	1	0	0	1
Smartcard - Bootstrap	3	0	0	0	0	3
Server - Bootstrap - DM Profile	3	0	0	0	0	3
User Interface	0	0	0	5	0	5
Reading Subtree structure	0	0	2	0	0	2
Application Settings	0	0	0	3	0	3
Inbox	0	2	0	0	0	2
Backward Compatibility	0	1	0	0	0	1
DM Commands	0	2	1	0	0	3
Correlator	0	0	1	0	0	1
TNDS Object	0	1	0	0	0	1
Authentication - TLS	0	1	0	0	0	1
Authentication - SSL	0	0	1	0	0	1
Total Test Cases - TF19, 20 & 22	6	7	10	17	0	40

DM v1.2 TestFest Participation



Status of DM v1.2 Test Cases per Test Group - TF-19, TF-20 & TF-22



DM v1.2 Issues Raised during TF-22

Issues	Comment
DM Bootstrap from smartcard - Results	Upon completion of TF-22, some DM Participants managed to "passed" TC-15 & TC-17, (Smartcard Bootstrap - CP Profile). Unfortunately, the results couldn't be included in the official ETR as they were achieved after the conclusion of TF-22.
Registration of Smartcards implementations in TestFest Events	There was a request from a TF-22 Participant company to allow Smartcard Manufactures to register for DM TestFest Events. Currently Smartcard Manufactures are attending these Events as a Supporting Companies.

DM v1.2 TestFest Data

		Total					TF-22					TF-20					TF-19				
		P	F	O	I	NA	P	F	O	I	NA	P	F	O	I	NA	P	F	O	I	NA
MD5 Authentication	DeviceManagement-v1.2-int-001	15	0	0	1	0	3	0	0	1	0	9	0	0	0	0	3	0	0	0	0
MD5 Authentication	DeviceManagement-v1.2-int-002	16	0	0	0	0	4	0	0	0	0	9	0	0	0	0	3	0	0	0	0
GET Command	DeviceManagement-v1.2-int-003	16	0	0	0	0	4	0	0	0	0	9	0	0	0	0	3	0	0	0	0
GET Command	DeviceManagement-v1.2-int-004	16	0	0	0	0	4	0	0	0	0	9	0	0	0	0	3	0	0	0	0
GET Command	DeviceManagement-v1.2-int-005	16	0	0	0	0	4	0	0	0	0	9	0	0	0	0	3	0	0	0	0
GET Command	DeviceManagement-v1.2-int-006	14	0	0	2	0	4	0	0	0	0	7	0	0	2	0	3	0	0	0	0
REPLACE Command	DeviceManagement-v1.2-int-007	16	0	0	0	0	4	0	0	0	0	9	0	0	0	0	3	0	0	0	0
ACL Behaviour	DeviceManagement-v1.2-int-008	13	2	0	1	0	2	2	0	0	0	8	0	0	1	0	3	0	0	0	0
Error Handling	DeviceManagement-v1.2-int-009	16	0	0	0	0	4	0	0	0	0	9	0	0	0	0	3	0	0	0	0
HMAC Authentication	DeviceManagement-v1.2-int-010	10	0	0	0	6	1	0	0	0	3	6	0	0	0	3	3	0	0	0	0
HMAC Authentication	DeviceManagement-v1.2-int-011	10	0	0	0	6	1	0	0	0	3	6	0	0	0	3	3	0	0	0	0
Large Object	DeviceManagement-v1.2-int-012	8	3	0	1	4	1	3	0	0	0	4	0	0	1	4	3	0	0	0	0
Notification	DeviceManagement-v1.2-int-013	9	0	0	0	7	2	0	0	0	2	5	0	0	0	4	2	0	0	0	1
Server - Bootstrap - CP Profile	DeviceManagement-v1.2-int-014	8	0	0	0	8	2	0	0	0	2	4	0	0	0	5	2	0	0	0	1
Smartcard - Bootstrap	DeviceManagement-v1.2-int-015	0	1	0	1	13	0	1	0	1	1	0	0	0	0	9	0	0	0	0	3
Smartcard - Bootstrap	DeviceManagement-v1.2-int-016	0	0	0	0	15	0	0	0	0	3	0	0	0	0	9	0	0	0	0	3
Smartcard - Bootstrap	DeviceManagement-v1.2-int-017	0	0	0	1	11	0	0	0	1	2	0	0	0	0	6	0	0	0	0	3
Server - Bootstrap - DM Profile	DeviceManagement-v1.2-int-018	0	0	0	0	16	0	0	0	0	4	0	0	0	0	9	0	0	0	0	3
Server - Bootstrap - DM Profile	DeviceManagement-v1.2-int-019	0	0	0	0	16	0	0	0	0	4	0	0	0	0	9	0	0	0	0	3
Server - Bootstrap - DM Profile	DeviceManagement-v1.2-int-020	0	0	0	0	16	0	0	0	0	4	0	0	0	0	9	0	0	0	0	3
User Interface	DeviceManagement-v1.2-int-021	12	0	0	0	4	4	0	0	0	0	6	0	0	0	3	2	0	0	0	1
User Interface	DeviceManagement-v1.2-int-022	12	0	0	0	4	4	0	0	0	0	6	0	0	0	3	2	0	0	0	1
User Interface	DeviceManagement-v1.2-int-023	12	0	0	0	4	4	0	0	0	0	6	0	0	0	3	2	0	0	0	1
User Interface	DeviceManagement-v1.2-int-024	12	0	0	0	4	4	0	0	0	0	6	0	0	0	3	2	0	0	0	1
User Interface	DeviceManagement-v1.2-int-025	12	0	0	0	4	4	0	0	0	0	6	0	0	0	3	2	0	0	0	1
Reading Subtree structure	DeviceManagement-v1.2-int-026	10	0	0	0	6	2	0	0	0	2	5	0	0	0	4	3	0	0	0	0
Reading Subtree structure	DeviceManagement-v1.2-int-027	9	0	0	0	7	2	0	0	0	2	4	0	0	0	5	3	0	0	0	0
Application Settings	DeviceManagement-v1.2-int-028	15	0	0	0	1	3	0	0	0	1	9	0	0	0	0	3	0	0	0	0

DM v1.2 TestFest Data

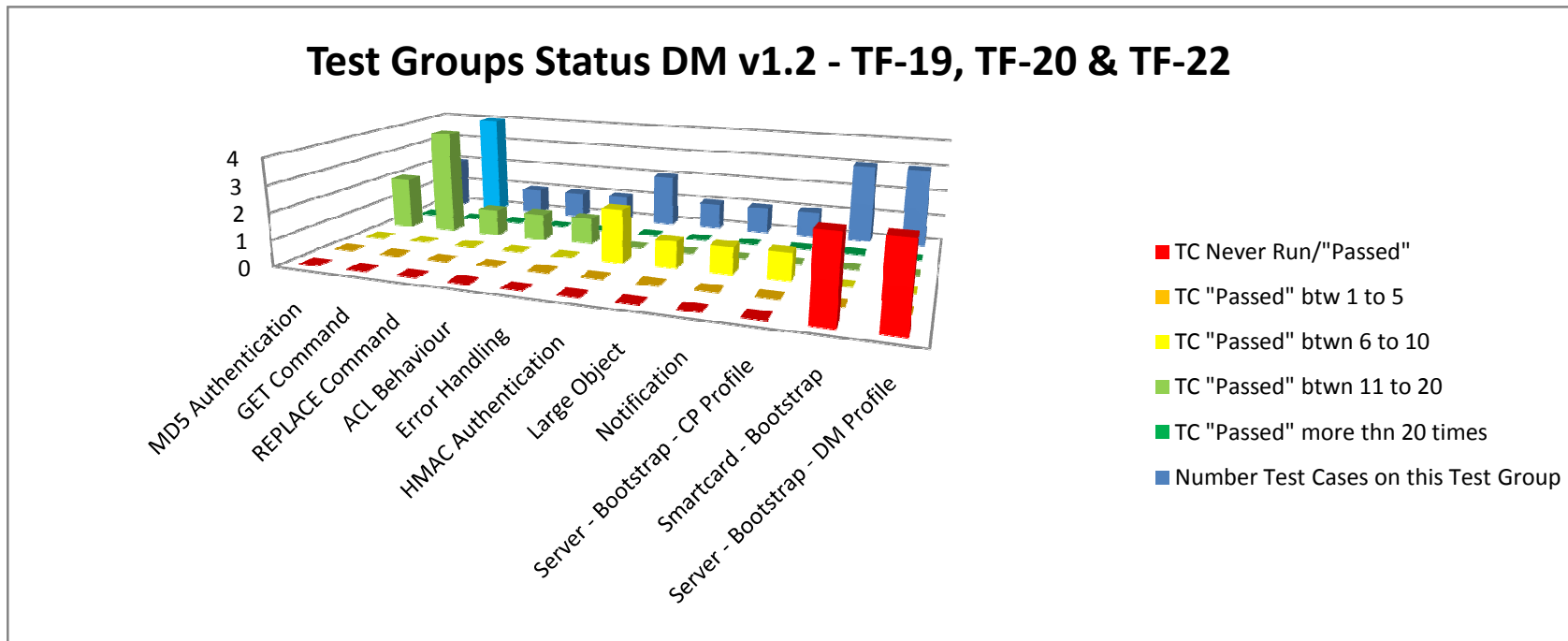
		Total					TF-22					TF-20					TF-19				
		P	F	O	I	NA	P	F	O	I	NA	P	F	O	I	NA	P	F	O	I	NA
Application Settings	DeviceManagement-v1.2-int-029	15	0	0	0	1	3	0	0	0	1	9	0	0	0	0	3	0	0	0	0
Application Settings	DeviceManagement-v1.2-int-030	13	0	0	2	1	3	0	0	0	1	7	0	0	2	0	3	0	0	0	0
Inbox	DeviceManagement-v1.2-int-031	1	1	0	0	14	0	1	0	0	3	0	0	0	0	9	1	0	0	0	2
Inbox	DeviceManagement-v1.2-int-032	3	0	1	0	12	0	0	1	0	3	2	0	0	0	7	1	0	0	0	2
Backward Compatibility	DeviceManagement-v1.2-int-033	2	0	0	0	14	1	0	0	0	3	0	0	0	0	9	1	0	0	0	2
DM Commands	DeviceManagement-v1.2-int-034	8	1	0	1	6	1	1	0	0	2	4	0	0	1	4	3	0	0	0	0
DM Commands	DeviceManagement-v1.2-int-035	4	0	0	0	12	0	0	0	0	4	3	0	0	0	6	1	0	0	0	2
DM Commands	DeviceManagement-v1.2-int-036	2	0	0	0	14	0	0	0	0	4	2	0	0	0	7	0	0	0	0	3
Correlator	DeviceManagement-v1.2-int-037	7	0	0	0	9	1	0	0	0	3	3	0	0	0	6	3	0	0	0	0
TNDS Object	DeviceManagement-v1.2-int-038	4	0	0	0	12	0	0	0	0	4	3	0	0	0	6	1	0	0	0	2
Authentication - TLS	DeviceManagement-v1.2-int-039	5	1	0	0	10	2	0	0	0	2	2	1	0	0	6	1	0	0	0	2
Authentication - SSL	DeviceManagement-v1.2-int-040	7	1	0	0	8	2	0	0	0	2	4	1	0	0	4	1	0	0	0	2

Test Group	Test Case	Description
MD5 Authentication	DeviceManagement-v1.2-int-001	Purpose of this verification is to show compliance with MD-5 client authentication.
MD5 Authentication	DeviceManagement-v1.2-int-002	Purpose of this verification is to show compliance with MD-5 server authentication.
GET Command	DeviceManagement-v1.2-int-003	Purpose of this verification is to show compliance with the GET command on a leaf node.
GET Command	DeviceManagement-v1.2-int-004	Purpose of this verification is to show compliance with the GET command on a node that doesn't exist.
GET Command	DeviceManagement-v1.2-int-005	Purpose of this verification is to show compliance with the GET command on an interior node.
GET Command	DeviceManagement-v1.2-int-006	Purpose of this verification is to show compliance with the GET on an inaccessible leaf node.
REPLACE Command	DeviceManagement-v1.2-int-007	Purpose of this verification is to show compliance with REPLACE on permanent leaf node.
ACL Behaviour	DeviceManagement-v1.2-int-008	Purpose of this verification is to show compliance with management node ACL behaviour.
Error Handling	DeviceManagement-v1.2-int-009	Purpose of this verification is to show compliance with the error handling when connection failure occurs during the SyncML DM session.
HMAC Authentication	DeviceManagement-v1.2-int-010	Purpose of this verification is to show compliance with HMAC client authentication.
HMAC Authentication	DeviceManagement-v1.2-int-011	Purpose of this verification is to show compliance with HMAC server authentication.
Large Object	DeviceManagement-v1.2-int-012	Purpose of this verification is to show compliance with the large object/multiple commands.
Notification	DeviceManagement-v1.2-int-013	Purpose of this verification is to show compliance with notification initiated session.
Server - Bootstrap - CP Profile	DeviceManagement-v1.2-int-014	Purpose of this verification is to show compliance with Server Initiated bootstrap using Client Provisioning Profile.
Smartcard - Bootstrap	DeviceManagement-v1.2-int-015	Purpose of this test is to check that a Device Management client supports bootstrap from the Smart Card using the Client Provisioning profile
Smartcard - Bootstrap	DeviceManagement-v1.2-int-016	Purpose of this test is to check that a Device Management client supports bootstrap from the Smart Card using the Device Management Profile and WBXML encoded TNDs objects for the bootstrap information
Smartcard - Bootstrap	DeviceManagement-v1.2-int-017	Purpose of this test is to check that a Client removes from the DM tree the account information for a DM Server previously bootstrapped from the Smart Card when that information is no longer present in the Smart Card
Server - Bootstrap - DM Profile	DeviceManagement-v1.2-int-018	Purpose of this test is to check that a DM client supports server initiated bootstrap using the DM profile, WBXML encoded TNDs objects and the Inbox, under transport neutral security when the transport method used does not have appropriate security. NETWORKID is used.

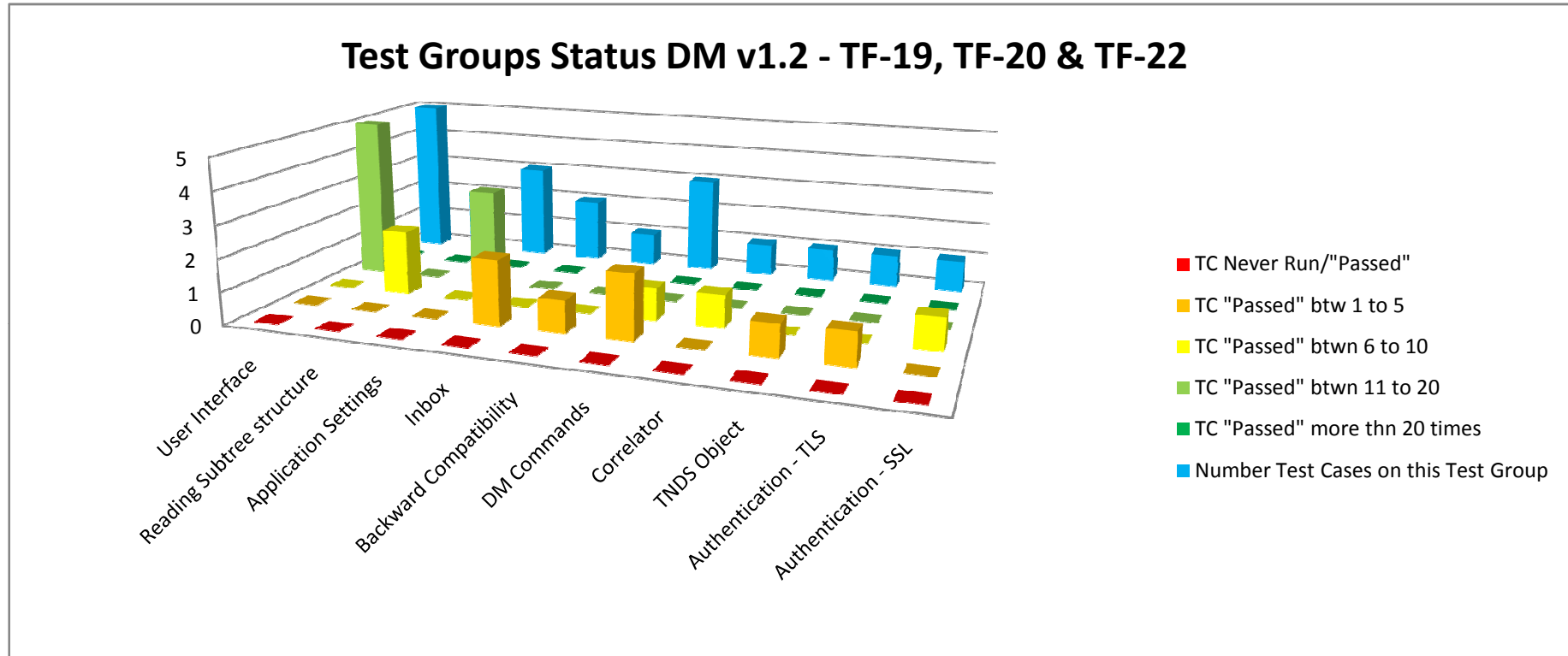
Test Group	Test Case	Description
Server - Bootstrap - DM Profile	DeviceManagement-v1.2-int-019	Purpose of this test is to check that a DM client supports server initiated bootstrap using the DM profile WBXML encoded TNDIS objects and the Inbox under transport neutral security when the transport method used does not have appropriate security. USERPIN is used.
Server - Bootstrap - DM Profile	DeviceManagement-v1.2-int-020	Purpose of this test is to check that a DM client supports server initiated bootstrap using the DM profile, WBXML encoded TNDIS objects and the Inbox, under transport neutral security when the transport method used does not have appropriate security. USERPIN_NETWORKID is used.
User Interface	DeviceManagement-v1.2-int-021	Purpose of this verification is to show compliance with UI Display Alert.
User Interface	DeviceManagement-v1.2-int-022	Purpose of this verification is to show compliance with UI Confirmation Alert.
User Interface	DeviceManagement-v1.2-int-023	Purpose of this verification is to show compliance with UI Text Input Alert.
User Interface	DeviceManagement-v1.2-int-024	Purpose of this verification is to show compliance with UI Single Choice Alert.
User Interface	DeviceManagement-v1.2-int-025	Purpose of this verification is to show compliance with UI Multiple Choice Alert.
Reading Subtree structure	DeviceManagement-v1.2-int-026	Purpose of this verification is to show compliance with the server reading subtree structure without data from part of the management tree.
Reading Subtree structure	DeviceManagement-v1.2-int-027	Purpose of this verification is to show compliance with the server reading subtree structure and data from part of the management tree.
Application Settings	DeviceManagement-v1.2-int-028	Purpose of this verification is to verify creation of new Application Setting in client using DM server
Application Settings	DeviceManagement-v1.2-int-029	Purpose of this verification is to verify modification of Application Settings in client using DM server.
Application Settings	DeviceManagement-v1.2-int-030	Purpose of this verification is to verify deletion of Application Settings in client using DM server.
Inbox	DeviceManagement-v1.2-int-031	Purpose of this test is to check that a DM client supports the Inbox object and that the information in the Inbox is correctly mapped onto the DM tree
Inbox	DeviceManagement-v1.2-int-032	Purpose of this test is to check that a Device Management client rejects Get operations from a DM server on the “./Inbox” node.
Backward Compatibility	DeviceManagement-v1.2-int-033	Purpose of this test is to verify backwards compatibility between a DM 1.2 server and a DM 1.1.2 client.
DM Commands	DeviceManagement-v1.2-int-034	Purpose of this test case is to check if the Test Object supports implicit addition of parent interior nodes for an addition of a child node whose valid parent/parents does not exist in the DM Tree
DM Commands	DeviceManagement-v1.2-int-035	To check if the Test Object can handle a Get with 'list=TNDIS'. DM Server issues a Get on './DevDetail?list=TNDIS+ACL+Format+Value'
DM Commands	DeviceManagement-v1.2-int-036	To check if the Test Object can handle the copy command, It would be followed by a Get command on both the URI

Test Group	Test Case	Description
Correlator	DeviceManagement-v1.2-int-037	Purpose of this verification is to show capability of correlator use
TNDS Object	DeviceManagement-v1.2-int-038	Purpose of this verification is to show capability to add a serialized management object to the DM tree
Authentication - TLS	DeviceManagement-v1.2-int-039	Purpose of this verification is to test transport layer authentication using TLS 1.0
Authentication - SSL	DeviceManagement-v1.2-int-040	Purpose of this verification is to test transport layer authentication using SSL 3.0

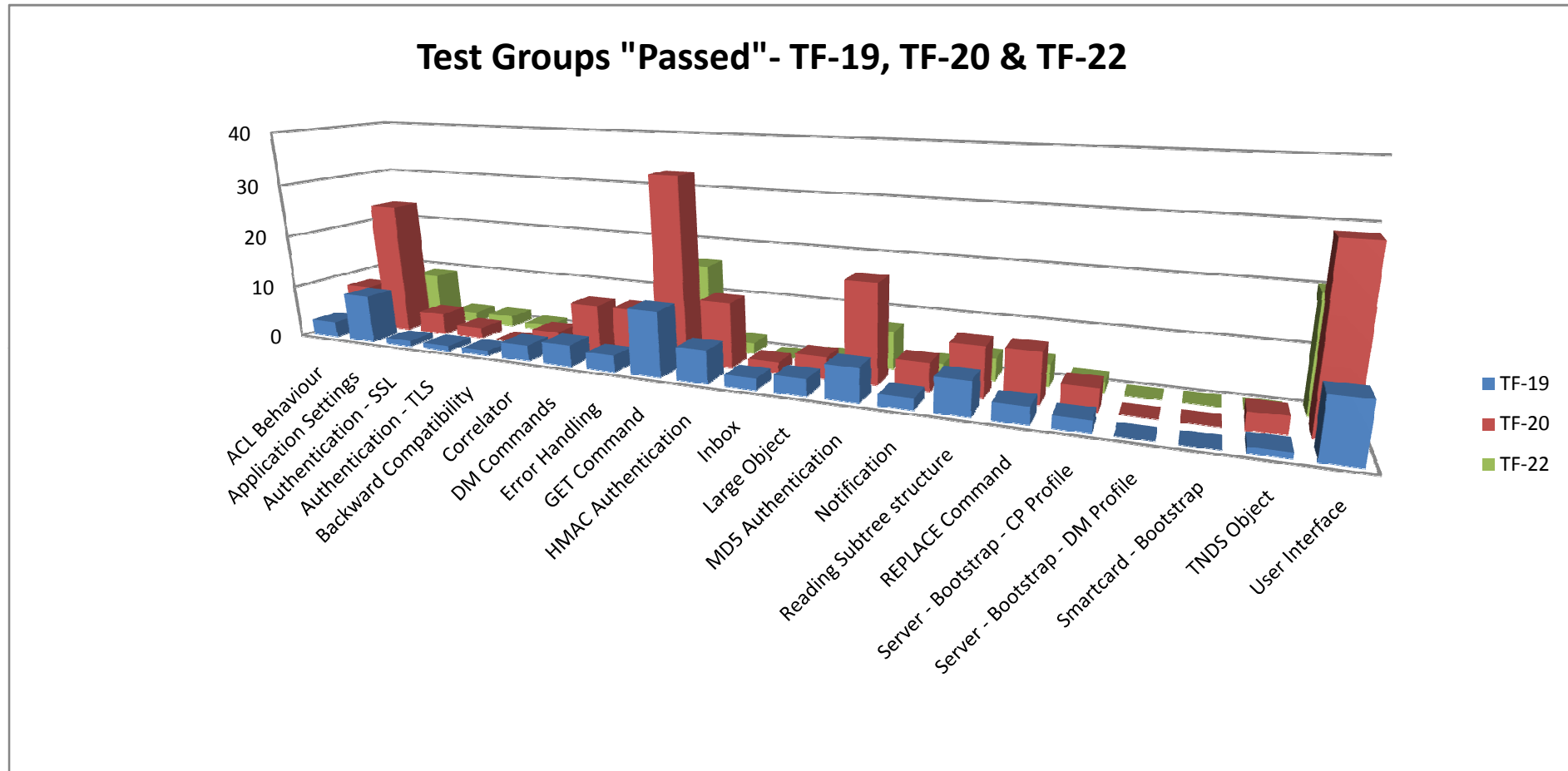
Status of DM v1.2 Test Groups - TF-19, TF-20 & TF-22



Status of DM v1.2 Test Groups - TF-19, TF-20 & TF-22



DM v1.2 Test Groups "Passed"- TF-19, TF-20 & TF-22



DM v1.2 Test Groups "Failed"- TF-19, TF-20 & TF-22

