



Rich Communication Suite

Technical Realization
Release 1
Version 1.0
16th December 2008

This is a non-binding permanent reference document of the GSM Association.

Copyright Notice

Copyright © 2008 GSM Association

Antitrust Notice

The information contain herein is in full compliance with the GSM Association's antitrust compliance policy.

Table of Contents

1.	Introduction and Scope	4
1.1.	Overview	4
1.2.	In Scope	4
1.3.	References	4
2.	RCS Architecture	6
3.	General	7
3.1.	Addressing	7
3.1.1.	Overview	7
3.1.2.	Device Incoming SIP Request	8
3.1.3.	Device Outgoing SIP Request	8
3.2.	Registration	9
4.	Presence and Capability Discovery	9
4.1.	Architecture	9
4.2.	Presence Data Model	11
4.2.1.	Overview	11
4.2.2.	Person	11
4.2.3.	Service	13
4.2.4.	Device	14
4.2.5.	Example Document	14
4.3.	Rules to Ensure Backwards Compatibility	15
4.4.	Subscriptions and Authorization	16
4.4.1.	Overview	16
4.4.2.	XML Document Structure	17
4.4.3.	Client Procedures, Initiation of Presence Sharing	21
4.4.4.	Client Procedures, Removal of Presence Sharing	22
4.5.	Caching Presence Information	22
4.6.	Publish	23
4.7.	Storage of the SIP-Etag Value & Presence Source Device Switching On/Off	23
4.8.	Status Icon Handling	24
4.8.1.	Presentity Side	24
4.8.2.	Watcher Side	24
4.8.3.	Network Handling	25
4.9.	Retrieval of Service Capabilities	25
4.9.1.	<i>General Overview</i>	25
4.9.2.	<i>Publication of the Services Capabilities at the Presentity</i>	26
4.9.3.	<i>Operator Controlled Capability Handling</i>	26
4.9.4.	<i>Presence Rule for Anonymous Fetch</i>	26
4.9.5.	<i>Service Capabilities Query During a Call</i>	26
4.9.6.	UI Related Aspects for Image Share and Video Share	27
4.10.	XDM Document Management	27
5.	Address Book	28
5.1.	Enhanced Address Book	28

5.2.	Network Address Book	28
6.	Content Sharing	28
6.1.	Video Share	29
6.2.	Image Share	29
7.	File Transfer	29
8.	Messaging	29
8.1.	Legacy Messaging	29
8.2.	Chat	29
8.3.	Other Messaging Functions	30
9.	Other Services.....	30
9.1.	Multimedia CLI	30
Appendix A: Items for Further Study (Informative).....		30
Appendix B: Signalling sequences for Presence sharing (Informative) ...		31
B.1	Symmetric Presence invite and reactive authorization, Accept.....	31
B.2	Symmetric Presence invite and reactive authorization, Block	31
B.3	Symmetric Presence invite and reactive authorization, Ignore/No Answer	32
B.4	Terminating a presence relationship using Revoke	33
DOCUMENT MANAGEMENT		34

1. INTRODUCTION AND SCOPE

1.1. Overview

This document describes the architecture and technical details needed for RCS (Rich Communication Suite).

For a general overview of RCS including high-level requirements, please see the functional description document [FUNCDESC].

1.2. In Scope

The scope of the document includes only the RCS Release 1.

The scope of this RCS release is defined in the [FUNCDESC] document and mainly encompasses:

1. Enhanced Address Book including
 - Sharing of Social Presence Information with a list of contacts agreed by the end-user
 - Fetching capability of all contacts in the contact list
2. Content Sharing
 - Video Share
 - Image Share
3. File transfer
4. Enhanced Messaging

1.3. References

[24.229]	TS 24.229: Internet Protocol (IP) multimedia call control protocol based on Session Initiation Protocol (SIP) and Session Description Protocol (SDP); Stage 3, V7.13.1 http://www.3gpp.org
[IMENDORSE]	RCS Endorsement of OMA SIP/SIMPLE IM 1.0 https://infocentre.gsm.org/cgi-bin/grp_details.cgi?RD&group
[IMAGESHARE]	PRD IR.79 Image Share Interoperability Specification, 1.1, http://www.gsmworld.com/
[IR.65]	PRD IR.65 IMS Roaming & Interworking Guidelines, 3.6, http://www.gsmworld.com/
[OMADS]	DS Protocol, 1.2.1, http://www.openmobilealliance.org/
[PRESENCE]	Presence SIMPLE Specification, 1.1, http://www.openmobilealliance.org/
[Presence2.0_DDS]	Presence SIMPLE Data Specification, Draft Version 2.0, 15 October 2008

	http://www.openmobilealliance.org/
[Presence2.0_TS]	Presence SIMPLE Specification, Draft Version 2.0, 14 October 2008 http://www.openmobilealliance.org/
[Presence_Content]	Presence Content XDM Specification, Draft Version 1.0, 01 October 2008 http://www.openmobilealliance.org/
[PRESENCEIG]	Implementation Guidelines for OMA Presence SIMPLE v1.1 Presence, http://www.openmobilealliance.org/
[PresenceXDM]	Presence XDM Specification, Approved Version 1.1 – 27 Jun 2008 http://www.openmobilealliance.org/
[RFC 3261]	RFC 3261: SIP: Session Initiation Protocol, June 2002 http://www.ietf.org
[RFC 3966]	RFC 3966: The tel URI for Telephone Numbers, December 2004 http://www.ietf.org
[RFC 4482]	RFC 4482: CIPID: Contact Information for the Presence Information Data Format, July 2006 http://www.ietf.org
[RLSXDM]	Resource List Server (RLS) XDM Specification Approved Version 1.1 – 27 Jun 2008, http://www.openmobilealliance.org/
[SharedXDM]	Shared XDM Specification, Approved Version 1.1 – 27 Jun 2008 http://www.openmobilealliance.org/
[SIMPLEIM]	Instant Messaging using SIMPLE, 1.0, http://www.openmobilealliance.org/
[VIDEOSHARE]	PRD IR.74 Video Share Interoperability Specification, 1.3, http://www.gsmworld.com/
[XDM1.1_AD]	XML Document Management Architecture, Approved Version 1.1, 27 June 2008 http://www.openmobilealliance.org/
[XDM2.0_AD]	XML Document Management Architecture, Candidate Version 2.0, 16 September 2008 http://www.openmobilealliance.org/
[XDM1.1_Core]	XML Document Management (XDM) Specification, Approved Version 1.1, 27 June 2008 http://www.openmobilealliance.org/
[XDM2.0_Core]	XML Document Management (XDM) Specification, Candidate Version 2.0, 16 September 2008 http://www.openmobilealliance.org/
[XDMIG]	Implementation Guidelines for OMA XDM v1.1, http://www.openmobilealliance.org/

2. RCS ARCHITECTURE

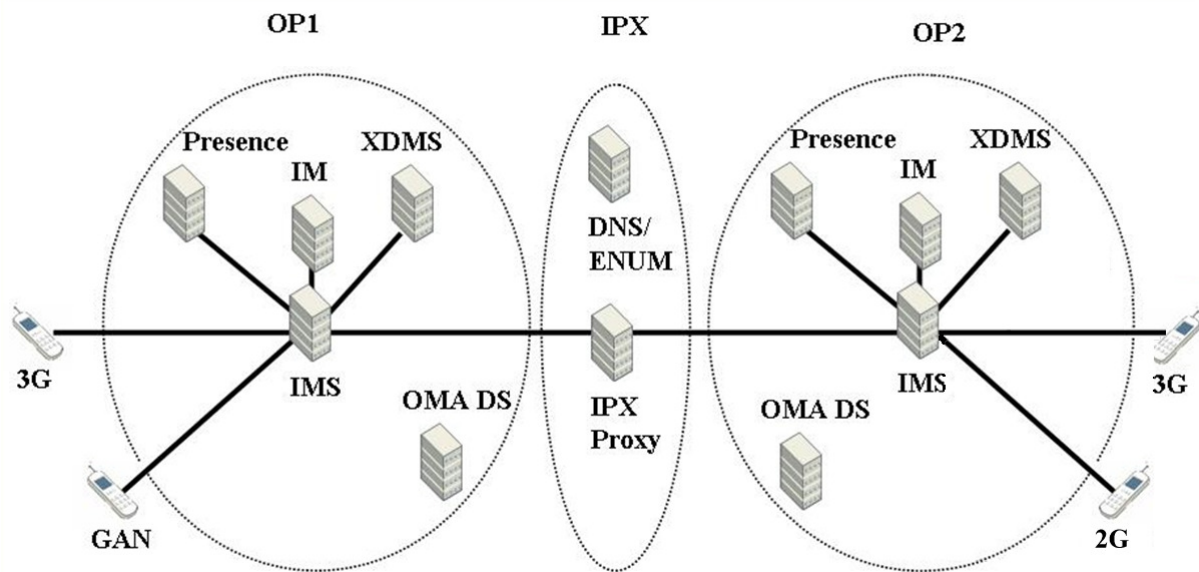


Figure 1: Simplified RCS Architecture

The figure above shows a simplified illustration of the overall architecture for RCS. Users can be connected to each other for the purpose of rich communication via IP based NNI using for example IPX (IP Exchange) handling the transport of both signalling and media between OP1 to OP2. Obviously RCS can be also offered as an intra-operator service even though this example shows an inter-operator scenario.

In order to assure interoperability, the RCS service is based on User-Network and Network-Network interfaces as defined in following specifications:

- Presence and Capability Discovery [PRESENCE]
- Video Share [VIDEOSHARE]
- Image Share [IMAGESHARE]
- Messaging [SIMPLEIM]

It should be noted that NNI is a part of the RCS concept. The usage of IPX, as shown in the Figure 1 is a way of NNI realisation, supporting the transport of protocols used in RCS NNI (as illustrated in Figure 2).

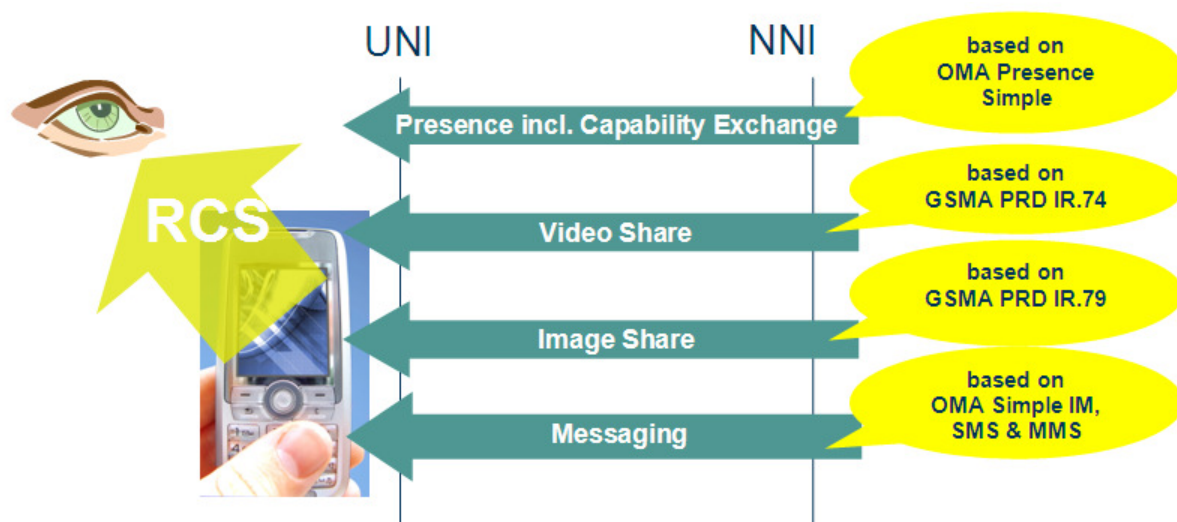


Figure 2: UNI's and NNI's of RCS

Note about Generic Access Network (GAN)

Generic Access to A/Gb interface provides a secure mechanism, using the SIM credentials, to access the mobile operator core network (both packet and circuit switched) using any unlicensed spectrum technology via a generic IP network. In fact, access to mobile operator core network via GAN is fully transparent from RCS perspective, and as such it does not lead to any particular limitation or impact from service point of view.

As a consequence, from access network perspective, this technology is fully part of the scope of RCS, whatever Release is addressed, irrespective of the release.

In this RCS Release, voice services are only supported on access networks offering natively the required CS voice capability (thus without the need for CS/PS voice conversion performed by MGW etc components in the network). In practice, for example using Video Share and Image Share with non-mobile access networks is out of scope for this RCS release. GAN can be used for this RCS release, since it can be seen as an extension of the cellular network and does not require CS/PS voice conversion mechanisms.

3. GENERAL

3.1. Addressing

3.1.1. Overview

Telephone numbers in the legacy address book must be usable (regardless of whether RCS contacts have been enriched or not) for the identification of contacts of incoming and outgoing SIP requests. Note that these formats apply only to RCS

services and should not impact the manner in which other services may have to convey phone numbers or even URIs.

3.1.2. Device Incoming SIP Request

From/P-Asserted-Identity:

For device incoming SIP requests, the address(es) of the contact are, depending on the type of request, provided as a URI in the body of the request (e.g. in case of a Watcher Info notification) or contained in the P-Asserted-Identity and/or the From headers. If P-Asserted-Identity is present, the From header will be ignored. The receiving client will try to extract the contact's phone number out of the following types of URI's:

- TEL URI's (e.g. tel:+1234578901 or tel:0234578901;phone-context=*phonecontextvalue*)
- SIP URI's with a "user=phone" parameter, the contact's phone number will be provided in the user part (e.g. sip:+1234578901@operator.com;user=phone or sip: 0234578901;phone-context=*phonecontextvalue*@operator.com;user=phone)

Note: SIP URI's without a "user" parameter where the user part is of the form "+digits" (e.g. sip:+1234578901@gsma.org) may also be supported if none of the previous types of URI are. However, this is not the recommended practice.

Note: Due to interworking with other (non-RCS) IMS based services, it may happen that still other types of URI's are received (e.g. alpha-numeric or anonymous URI's). How to deal with this is up to the client implementation.

3.1.3. Device Outgoing SIP Request

Identification of the contact:

The RCS client may use a telephone number (in local format e.g. 0234578901 or global format +1234578901) set in the RCS address book or a dial string entered by the user.

In case of international-format telephone number, the device should support tel-URI (e.g. tel:+12345678901) as defined in [RFC 3966] and SIP-URI (e.g. sip:+12345678901@domain;user=phone) with the user parameter set to "phone" as defined in [RFC 3261]. This should be configurable on the device according to the operator's requirements or constraints related to national regulatory framework of SIP-SIP interconnection. If none of the above constraints apply, the use of tel URI is recommended since the domain name of the SIP-URI is not significant.

In case of non-international format telephone number, the RCS client should support tel-URI and SIP-URI (the user parameter should be set to "phone") with a phone-context value set as defined in [24.229] for home local numbers (e.g. tel:0234578901;phone-context=<home-domain-name>). Like the international

number case, whether a TEL URI or a SIP URI is used should be configurable on the device according to the operator's requirements or constraints related to national regulatory framework of SIP-SIP interconnection. If none of the above constraints apply, the use of tel URI is recommended.

Self-Identification to the network and the addressed contact:

As telephone number is the main identifier to be used by the callee in order to identify the caller, the caller should set the P-Preferred-Identity header with a tel-URI which has been implicitly registered. The tel-URI could be provisioned in the device of the caller or it could be retrieved at the time of the registration using the P-Associated-URI header received from the network. This tel-URI contains the caller's telephone number in international format e.g. tel:+12345678901.

The From header should be set with the same URI as the P-Preferred-identity i.e. the tel-URI.

3.2. Registration

The RCS terminal shall register all feature tags as per service it supports, in the Contact header of a SIP REGISTER message. For information about the detailed structure of each feature tag related to RCS services, see reference [VIDEOSHARE], [IMAGESHARE] and [IMENDORSE]. For example, the following feature tags would be registered by an RCS terminal supporting Messaging, Video Share and Image Share:

- +g.oma.sip-im
- +g.3gpp.cs-voice
- +g.3gpp.iari-ref:urn:urn-xxx:3gpp-application.ims.iari.gsma-is

4. PRESENCE AND CAPABILITY DISCOVERY

4.1. Architecture

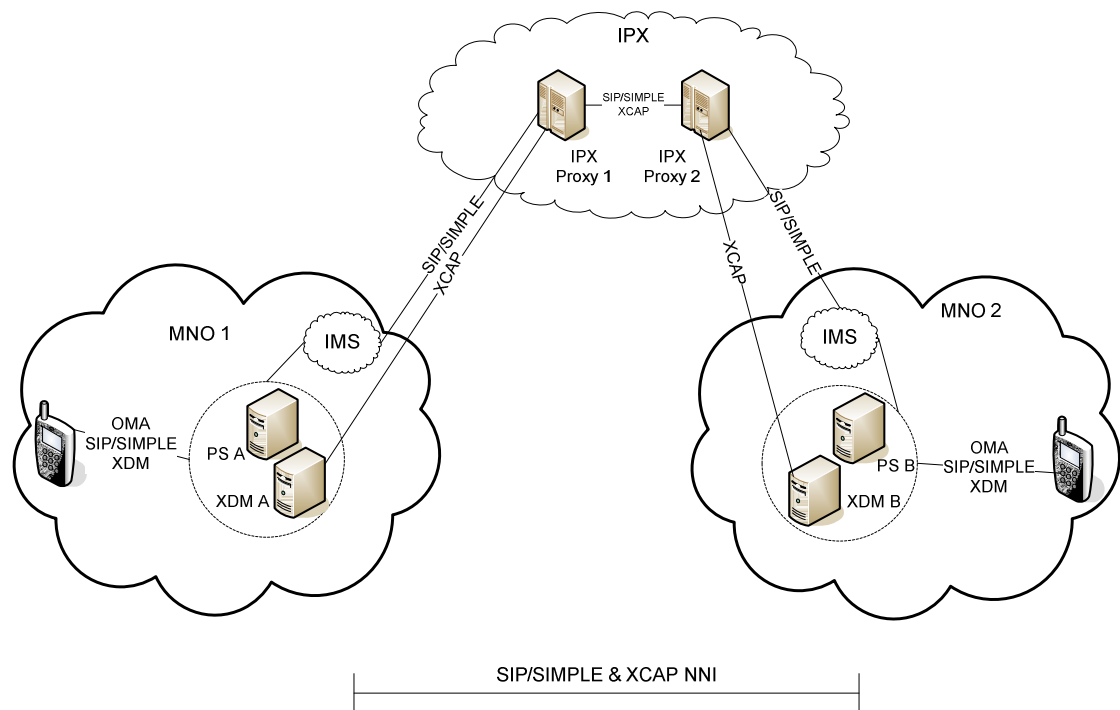


Figure 3: Overall Architecture of Presence as a part of RCS

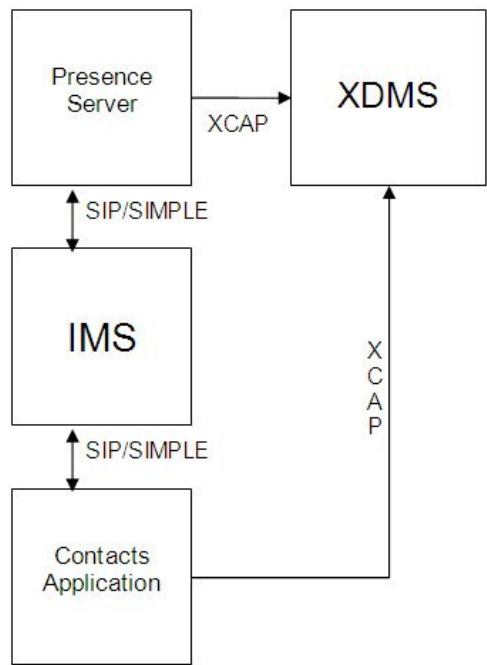


Figure 4: RCS Presence Architecture

Presence and capability architecture in RCS is based on [PRESENCE].

Users share their Social Presence Information (“Presence Enhanced Address Book”)

- Implemented using the Presence Simple protocol

Users share their communication capability information (“Capability Enhanced Address Book”)

- Implemented using the Presence Simple protocol

According to [IR.65], the interworking connection should be carried out via IMS core systems. There is therefore no requirement to interface Presence Servers directly.

Note: In the case of Image Share or Video Share, communication capabilities are discovered during a CS voice call based on SIP OPTIONS.

User’s contacts data is stored to network and retrieved from the network (“Network Address Book”)

- Implemented using the OMA Data Sync [OMADS]

Optimization of Presence & XDM enabler according to work ongoing e.g. in OMA PAG WG has to be taken into account as a very important design principle. It is also important to notice potential issues such as battery drain in the terminal caused by the general always-on functionality and the number of Presence & capability updates.

As a general rule, Shared XDMS as defined in [XDM1.1_AD] shall be used for storing all presence-related lists, e.g. the list of subscribed contacts (“buddy” list) and the presence authorization lists. In this way the RCS client need only operate on lists in Shared XDMS, and only initially set the documents in RLS XDMS and Presence XDMS.

4.2. Presence Data Model

4.2.1. Overview

Implementation guidelines for the size/length of Presence information elements given in [PRESENCEIG] should be followed.

The following chapters illustrate the details of the Presence Data Model.

4.2.2. Person

Attribute	Specification	Comment
<u>Person:</u> <presence> -> <person>	RFC 4479	According to the presence schema defined in the [OMA PRESENCE SIMPLE], person related information is modelled with the

		<i>person</i> element. Each client only publishes one <i>person</i> element.
Willingness: <person> -> <Overriding-Willingness> -> <basic> -> Open	OMA	The presentity terminal publishes this attribute in which it wants to indicate its willingness to communicate: "Open" = Willing "Closed" = Not Willing Attribute not present = Unknown
Icon: <person> -> <status-icon>	RFC 4480	It's used as dynamic avatar. If the element is not present the client may chose to display icon stored in the address book. The picture shall not be included directly in the presence requests, but a HTTP URL shall be used. Presence Content XDMS procedures as specified in OMA Presence 2.0 and XDM 2.0 is used for uploading, publishing and retrieving the icon For further details see Chapter 4.8
Favorite Link: <person> -> <homepage>	RFC 4482	The <homepage> element provides a URI pointing to general information about the tuple or person, typically a web home page. This element can be used to convey one Favorite Link of the presentity.
Note: <person> -> <note>	RFC 4479	Presentity may write a piece of free text shown to watchers in their contacts books
Timestamp: <person> -> <timestamp>	RFC 4479	Timestamp when the presence information was published.

Note: "Willingness" is sometimes indicated in a client as "Availability". However since it is managed by the user himself and does not imply that communication is not possible, within OMA specifications this is considered as willingness. Availability indicates that on a technical level communication will be possible. Service Availability and Willingness are study items for later releases.

The RCS HyperAvailability information is carried by the OMA Overriding Willingness combined with an "until" value as specified in [Presence2.0_DDS], with element basic->open. An OMA Overriding Willingness element without the "until" is not interpreted as an RCS HyperAvailability information.

At the presentity side, the RCS client obtains the value of the attribute "Until" by adding a "HyperAvailability Period" value to the current time, to be conveyed in UTC format. The "HyperAvailability Period" value is configurable by the presentity's operator. An indicator on the RCS client display will inform the presentity user that its HyperAvailability status is active throughout the "HyperAvailability Period". During this time, the presentity user may deactivate its HyperAvailability status; this is

conveyed to watchers by means of a Publish without the Overriding Willingness element, using the same Entity Tag as that used to Publish Overriding Willingness when activating HyperAvailability.

On reception of a Notify with HyperAvailability information, the watcher RCS client will generate a notification (e.g. pop-up screen or distinctive sound) and provoke a distinctive change to the presentity's contact information display in the enhanced phonebook (e.g. blinking or distinctive pictogram) up to the specified "Until" time, at which point the display of the presentity's contact information will revert to normal. This display will also revert to normal on reception of a Notify without Overriding Willingness information (explicit deactivation by the presentity). The watcher RCS client shall maintain a history of the latest HyperAvailable events; this shall be accessible by the watcher user (for example from the communication history).

4.2.3. Service

Attribute	Specification	Comment
Tuple: <presence> -> <tuple>	RFC 3863	According to the presence schema defined in the [OMA PRESENCE SIMPLE], services are presented with tuple elements.
Status <tuple> -> <status> -> <basic> -> Open	RFC 3863	Mandatory element in RFC 3863. Once a tuple element is published the value 'open' will always be used. It doesn't have any particular meaning in RCS context.
Service-id <tuple> -> <service-description> -> <service-id>	OMA	<i>Service-description</i> element identifies a service and is described by a service-id and version. <i>Service-id</i> element contains a string that identifies a single service.
Version <tuple> -> <service-description> -> <version>	OMA	<i>Version</i> element contains the version number for the service, to identify different versions of the service (for example version number for specification number).
Contact <tuple> -> <contact>	RFC 3863	<i>Contact</i> element contains Presentity's communication address for the service. Contact address can be for example a TEL or SIP URI, depending on the service used. The use of the Contact element is optional (if used it has to be a global routable URI) since the client may use the URI stored in the Address Book when initiating communication with the presentity. RCS Presentities either do not insert any contact element or insert a contact element for which the address matches the one used for identifying itself in communication (see Chapter 3.1)
Timestamp <tuple> -> <timestamp>	RFC 3863	Timestamp when the presence information was published.

Service-descriptions for the Selected RCS Services

Registered Service-description values are listed in OMNA Presence <service-description> Registry:

<http://www.openmobilealliance.org/Technical/omna/omna-prs-PidfSvcDesc-registry.aspx>

CS Video Call

Service-id: org.3gpp.cs-videotelephony

Version: 1.0

Contact address type: TEL URI

Video Share

Service-id: org.gsma.videoshare

Version: 1.0

Contact address type: TEL / SIP URI

Image Share

Service-id: org.gsma.imageshare

Version: 1.0

Contact address type: TEL / SIP URI

Session Mode Messaging

Service-id: org.openmobilealliance:IM-Session

Version : 1.0

Contact address type: TEL / SIP URI

File Transfer

Service-id: org.openmobilealliance:File-Transfer

Version : 1.0

Contact address type: TEL / SIP URI

Note: WCDMA access network is required for CS Video Call service.

4.2.4. Device

The Device part of presence is not a part of the RCS Release 1.

4.2.5. Example Document

Following is an example document created according to the rules specified in this document.

```
<?xml version="1.0" encoding="UTF-8"?>
<presence xmlns="urn:ietf:params:xml:ns:pidf"
  xmlns:op="urn:oma:xml:prs:pidf:oma-pres"
```

```
xmlns:opd="urn:oma:xml:pde:pdf:ext"
xmlns:c="urn:ietf:params:xml:ns:pdf:cipid"
entity="sip:+1234578901@operator.com;user=phone">

<tuple id="a1">
  <status><basic>open</basic></status>
  <op:service-description>
    <op:service-id>org.3gpp.cs-videotelephony</op:service-id>
    <op:version>1.0</op:version>
  </op:service-description>
  <contact>tel:+358405344455</contact>
</tuple>

<tuple id="a12">
  <status><basic>open</basic></status>
  <op:service-description>
    <op:service-id>org.gsma.videoshare</op:service-id>
    <op:version>1.0</op:version>
  </op:service-description>
  <contact>tel:+358405344455</contact>
</tuple>

<tuple id="a123">
  <status><basic>open</basic></status>
  <op:service-description>
    <op:service-id>org.openmobilealliance:IM-Session</op:service-id>
    <op:version>1.0</op:version>
  </op:service-description>
  <contact>sip:+1234578901@operator.com;user=phone</contact>
</tuple>

<pdm:person id="a1233">
  <op:overriding-willingness opd:until="2008-10-28T21:00:00Z">
    <op:basic>open</op:basic>
  </op:overriding-willingness>
  <c:homepage>http://example.com/~alice</c:homepage>
  <pdm:note>I'll be PAG</pdm:note>
</pdm:person>

</presence>
```

4.3. Rules to Ensure Backwards Compatibility

In order to maintain enough flexibility and not to impose potentially sub-optimal technical choices on future RCS releases, the presence parsing in an RCS Release 1 client should be sufficiently robust. Therefore the following guidelines should be taken into account in RCS presence parsing:

- Unknown or unsupported elements and tuples could be present in the document. In that case they should be ignored.

- Unknown Service-Id's could be present in the document. Tuples containing those should be ignored.
- Unknown service versions of known services could be present in the presence document. Tuples containing those should be ignored.
- The same service could occur multiple times in the presence document with different contact addresses. To cope with this case, the following behaviour shall be used for displaying and using the tuples:
 - If one of the tuples contains a contact address that corresponds to the presentity about which the presence document was received, all others shall be ignored.
 - Tuples that contain a contact (address) element which corresponds to another presentity (another contact in the contact-list of the user or another Tel-URI) shall be ignored.
 - Tuples containing contact elements with types of addresses that are not supported by the client for that service shall be ignored (e.g. messaging using an e-mail address while e-mail is not supported by the client)
 - If after applying the above rules, there are still multiple non-ignored tuples remaining for the service, all but the first shall be ignored.
 - If after applying the above rules there is a non-ignored tuple remaining behavior shall be as follows
 - The capability to use the service for communication with the contact shall be announced to the user
 - If the remaining tuple contained no contact address or it matched the one of the presentity, the presentity's address will be used for setting up communication using that service
 - Otherwise the address contained in the contact element will be used for setting up the corresponding service
- Multiple person elements could be received. In that case all but the one with the most recent timestamp should be ignored.
- When using RLS subscriptions, information could be contained on presentities that were not known to be part of the presence list (e.g. because the list was updated by another client or application). If the unexpected presentity is a known contact, it is advised that the client starts treating this contact as being presence enabled and tries to retrieve an updated presence list from the network.

Note regarding the use of the address provided in the contact, the communication addresses (contact) part of service tuples shall not be:

- shown to the end-user, these addresses are handled locally by the terminal;
- used to request presence subscription, a RCS client is NOT supposed to subscribe to the contact associated with a service capability tuple received in a presence document.

4.4. Subscriptions and Authorization

4.4.1. Overview

When presence information is requested by a watcher of a presentity a SUBSCRIBE request is initiated (event package 'presence') according to [PRESENCE]. The watcher should be able to use the TEL URI to identify the presentity, see Chapter

		Page 16 of 35
--	--	---------------

3.1.

The support of RLS is mandatory for the clients and for the servers. Client shall conform to section 5.2.2.1 of the technical specification of [PRESENCE] and in addition to section 5.7.1 and 5.8 in [PRESENCEIG], section 5.1 in [XDMIG] and section 5.1.6 in [RLSXDM] as well. The XML documents shall follow the templates following later in this chapter.

Presence invitations are subject to reactive authorization to guarantee user privacy. This will allow the invited user (presentity) to accept, block or ignore an invitation to establish a presence relationship.

The presence authorization shall be symmetric, meaning that the inviting user also automatically authorizes the invited user to see his/her presence information, and that the invited user by accepting the presence invitation request both authorizes the inviting user to see his/her presence information and also subscribes to the inviting users presence information.

The RCS presentity shall be able to configure the presence authorization rules, which require the support in the RCS client and in the RCS Presence Server of [Presence-XDM]. The RCS client shall store a presence authorization document that follows [Presence-XDM] and the template rules described in section 5.8 in [PRESENCEIG].

In order for a presentity to be able to authorize the subscription of a watcher, the presentity needs to know which watcher(s) are trying to subscribe to the presence of the presentity. The RCS client and the Presence Server shall thus support section 5.3.1 and 5.4.4 of [PRESENCE].

When the subscription is authorized successfully, the presence server sends the presentity's presence document to the watcher by using the NOTIFY method as defined in [PRESENCE]. The format of the presence notification follows the Presence Data Model as describe above.

4.4.2. XML Document Structure

The Presence XDMS shall contain the following authorization rules, following the recommendations in [PRESENCEIG]:

- "allow own" rule – allows subscriptions to own presence data
- "confirm unlisted" rule – allows reactive authorization for contacts not yet allowed or blocked
- "granted contacts" rule – contains those contacts that I'm subscribing to for presence (points to "granted contacts" list in Shared XDMS)
- "blocked contacts" – contains those contacts that I have blocked (points to "blocked contacts" list in Shared XDMS)

The RLS XDMS shall for a RCS user contain a reference to the "rcs" list in Shared XDMS.

The Shared XDMS shall contain the following lists provided and managed by the RCS client:

		Page 17 of 35
--	--	---------------

- “*rcs*” list: This list includes all contacts you have a (symmetric) presence relation with. Commonly referred in RCS from both the “*buddylist*” and “*granted contacts*” lists as all your buddies shall be allowed to see your presence (symmetric).
- “*oma_buddylist*” list: Contains a reference to the “*rcs*” list where the actual buddies are stored. The “*oma_buddylist*” is not explicitly used and exists for compliance to [PRESENCEIG] and future extensibility.
- “*oma_grantedcontacts*” list: This list includes all contacts you have authorized to see your presence information. Contains a reference to “*rcs*” list
- “*oma_blockedcontacts*” list: Contains a reference to the “*rcs_blockedcontacts*” list where the actual permanently blocked contacts are stored and to the “*rcs_revokedcontacts*” list with the revoked users that are temporarily being blocked.
- “*rcs_blockedcontacts*”: Contains all permanently blocked contacts
- “*rcs_revokedcontacts*”: Contains all revoked contacts that are currently being blocked.

Note: The revoked contacts list is not intended to be shown to the end user. It is managed automatically.

Note: “granted contact” list and “buddylist” list have the same content. That is why it is possible to point to the same “*rcs*” list.

Presence XDMS:

AUID: *org.openmobilealliance.pres-rules*

Document name: *pres-rules*

Template:

GSM Association

RCS Technical Realization

```
<?xml version="1.0" encoding="UTF-8"?>
<cr:ruleset
  xmlns:ocp="urn:oma:xml:xdm:common-policy"
  xmlns:pr="urn:ietf:params:xml:ns:pres-rules"
  xmlns:cr="urn:ietf:params:xml:ns:common-policy">

  <cr:rule id="wp_prs_allow_own">
    <cr:conditions>
      <cr:identity>
        <cr:one id="sip:RCSUser@example.com"/>
      </cr:identity>
    </cr:conditions>
    <cr:actions>
      <pr:sub-handling>allow</pr:sub-handling>
    </cr:actions>
    <cr:transformations>
      <pr:provide-services>
        <pr:all-services/>
      </pr:provide-services>
      <pr:provide-persons>
        <pr:all-persons/>
      </pr:provide-persons>
      <pr:provide-devices>
        <pr:all-devices/>
      </pr:provide-devices>
      <pr:provide-all-attributes/>
    </cr:transformations>
  </cr:rule>

  <!-- This rule allows all service capabilities to be sent for anonymous requests -->
  <!-- in order to realize the service capabilities to all requirement -->
  <!-- This rule replaces the default "wp_prs_block_anonymous" rule -->
  <!-- Note: May be modified to only allow RCS specified services -->
  <cr:rule id="rcs_allow_services_anonymous">
    <cr:conditions>
      <ocp:anonymous-request/>
    </cr:conditions>
    <cr:actions>
      <pr:sub-handling>allow</pr:sub-handling>
    </cr:actions>
    <cr:transformations>
      <pr:provide-services>
        <pr:all-services/>
      </pr:provide-services>
      <pr:provide-all-attributes/>
    </cr:transformations>
  </cr:rule>

  <cr:rule id="wp_prs_unlisted">
    <cr:conditions>
      <ocp:other-identity/>
    </cr:conditions>
    <cr:actions>
      <pr:sub-handling>confirm</pr:sub-handling>
    </cr:actions>
  </cr:rule>

  <cr:rule id="wp_prs_grantedcontacts">
    <cr:conditions>
      <ocp:external-list>
        <ocp:entry anc="http://xcap.example.org/resource-
lists/users/sip:RCSUser@example.org/index/~/resource-
lists/list%5B@name=%22oma_grantedcontacts%22%5D"/>
      </ocp:external-list>
    </cr:conditions>
    <cr:actions>
      <pr:sub-handling>allow</pr:sub-handling>
    </cr:actions>
    <cr:transformations>
      <pr:provide-services>
        <pr:all-services/>
      </pr:provide-services>
    </cr:transformations>
  </cr:rule>
</cr:ruleset>
```

```

    </pr:provide-services>
    <pr:provide-persons>
      <pr:all-persons/>
    </pr:provide-persons>
    <pr:provide-devices>
      <pr:all-devices/>
    </pr:provide-devices>
    <pr:provide-all-attributes/>
  </cr:transformations>
</cr:rule>

<cr:rule id="wp_prs_blockedcontacts">
  <cr:conditions>
    <ocp:external-list>
      <ocp:entry anc="http://xcap.example.org/resource-
lists/users/sip:RCSUser@example.org/index/~/resource-
lists/list%5B@name=%22oma_blockedcontacts%22%5D"/>
    </ocp:external-list>
  </cr:conditions>
  <cr:actions>
    <pr:sub-handling>block</pr:sub-handling>
  </cr:actions>
</cr:rule>
</cr:ruleset>

```

RLS XDMS:
AUID: *rls-services*
Document name: *index*

Template:

```

<?xml version="1.0" encoding="UTF-8"?>
<rls-services xmlns="urn:ietf:params:xml:ns:rls-services">

  <service uri="sip:RCSUser@example.com;pres-list=rcs">
    <resource-list>http://xcap.example.com/services/resource-
lists/users/sip:RCSUser@example.com/index/~/resource-
lists/list%5B@name=%22rcs%22%5D</resource-list>
    <packages>
      <package>presence</package>
    </packages>
  </service>

</rls-services>

```

Shared XDMS:
AUID: *resource-lists*
Document name: *index*

Template:

```
<?xml version="1.0" encoding="UTF-8"?>
<resource-lists xmlns="urn:ietf:params:xml:ns:resource-lists"
  xmlns:xd="urn:oma:xml:xdm:xcap-directory"
  xmlns:xsi="http://www.w3.org/2001/XMLSchema-instance">

  <!-- The list oma_buddylist contains references to any individual list used according
  to OMA IG for presence subscriptions. -->
  <list name="oma_buddylist">
    <external anchor="http://xcap.example.org/resource-
lists/users/sip:RCSUser@example.org/index/~/resource-
lists/list%5B@name=%22rcs%22%5D"/>
  </list>

  <!-- The list oma_grantedcontacts contains the list of all granted contacts -->
  <list name="oma_grantedcontacts">
    <external anchor="http://xcap.example.org/resource-
lists/users/sip:RCSUser@example.org/index/~/resource-
lists/list%5B@name=%22rcs%22%5D"/>
  </list>

  <!-- The list oma_blockedcontacts contains the list of all blocked contacts. -->
  <list name="oma_blockedcontacts">
    <external anchor="http://xcap.example.org/resource-
lists/users/sip:RCSUser@example.org/index/~/resource-
lists/list%5B@name=%22rcs_blockedcontacts%22%5D"/>
    <external anchor="http://xcap.example.org/resource-
lists/users/sip:RCSUser@example.org/index/~/resource-
lists/list%5B@name=%22rcs_revokedcontacts%22%5D"/>
  </list>

  <!-- The list of buddies the owner wants be able to get presence information for -->
  <list name="rcs">
    <display-name>My presence buddies</display-name>
  </list>

  <!-- The list of blocked contacts -->
  <list name="rcs_blockedcontacts">
    <display-name>My blocked contacts</display-name>
  </list>

  <!-- The list of revoked contacts -->
  <list name="rcs_revokedcontacts">
    <display-name>My revoked contacts</display-name>
    <entry uri="tel:+123456" xd:last-modified="2008-12-24T14:32:14Z"/>
  </list>
</resource-lists>
```

Note: the entry in the “rcs_revokedcontacts” list is for illustrative purposes only. It is included as an example since it deviates slightly from the standard list usage.

4.4.3. Client Procedures, Initiation of Presence Sharing

When initiating a presence sharing request, the inviting user’s RCS client adds the invited user’s URI to the “rcs” list in Shared XDMS according to the procedures in [Shared-XDM].

Note: Before adding the invited user’s URI to the “rcs” list, the RCS client shall check if the URI is included in the “rcs_blockedcontacts” or “rcs_revokedcontacts” list. If so, the URI shall be removed from those lists.

When the invited user receives a notification to establish a presence relation, the user can either;

a) Accept the invitation, whereas the RCS client of the invited user adds the inviting

- User's URI to the "rcs" list in Shared XDMS according to the procedures in [Shared-XDM]. An example of a signalling sequence for the accept case is available in Appendix B.1.
- b) Block the invitation, whereas the RCS client of the invited user adds the inviting User's URI to the "rcs_blockedcontacts" list in Shared XDMS according to the procedures in [Shared-XDM]. An example of a signalling sequence for the block case is available in Appendix B.2.
 - c) Ignore the invitation, whereas the RCS client of the invited user removes the presence sharing invitation. An example of a signalling sequence for the ignore case is available in Appendix B.3.
 - d) Not answer the invitation. The presence sharing invitation is pending in the client until either "accepted", "blocked" or "ignored". In the signalling, there is no difference from the "ignore" case.

4.4.4. Client Procedures, Removal of Presence Sharing

When the user decides to end the presence relationship with one of his contacts, he has to use the revoke option in his device. This triggers a notification to the user as defined in [FUNCDESC] asking for confirmation. When this is indeed confirmed, the client will put the user on the "rcs_revokedcontacts" list, subsequently remove the user from the "rcs" list and remove the contact's presence information from the cache as defined in Chapter 4.5. When putting an entry for the contact in the "rcs_revokedcontacts" list the client includes a last modified attribute that indicates the current time in UTC.

When a client notices it has been blocked by a contact with whom Social Presence was shared (i.e. the RLS notify indicates the subscription is in state "terminated" and the reason indicates "rejected"), it will remove the contact from the "rcs" list and remove the contact's cached presence information.

All clients will process the "rcs_revokedcontacts" list periodically and remove those users that have been on it for long enough (e.g. several days). For that they will compare the last-modified attribute of the entries to the current time. Both the interval at which the list is checked and the period that a contact should remain in this list will be operator configurable client parameters.

With regards to the communication capabilities both clients should fall back to the procedures as defined in Chapter 4.9.

4.5. Caching Presence Information

The caching of presence information is a client procedure.

The RCS client must be able to locally store the most up-to-date presence information (that have been received through notifications) of all of the user's contacts. This locally stored information must be handled as a persistent cache (i.e. the data shall not be erased when the terminal is switched-off).

Whenever the watcher receives an empty presence document for a contact in a SIP NOTIFY for an active Social Presence relation, the client shall use the cached presence information pertaining to this contact instead of this empty document.

4.6. Publish

Presence document is published by using the PUBLISH method as defined in [PRESENCE]. Format of the presence notification is as defined according to the Presence Data Model as describe above.

When the application is started on the terminal the client sends a PUBLISH request according to the Presence Data Model.

The publication is maintained in the Presence Server whenever the application is running and by sending a refresh request before it expires.

A presence modify request is sent using the 'Sip-If-Match' header according to [PRESENCE].

4.7. Storage of the SIP-Etag Value & Presence Source Device Switching On/Off

This sub-clause addresses proper device support mechanisms for the use of publications with long term expire value period (e.g. several days or even more).

The device hosting the Presence Source must be able to be powered off without cancelling active publication event state in the Presence Server. Hence this publication event state can continue being delivered to watchers as long as it has not expired.

For example, a watcher that was not connected for some period of time and that is switching on, will be notified with the latest presentity's Social Presence Information (if not expired in Presence Server), even if the presentity's device is not powered on at the particular time when the watcher is switching on.

The Presence Source must follow the recommendation given in section 5.2.2 ('Storage of SIP-Etag Value') of [PRESENCEIG] which addresses the storage of the value of the "SIP-Etag" header field in persistent storage space and the use of the stored value in conditional publications for the lifetime of the publication.

By this way, the Presentity can manipulate the previous publication event state after the device is powered on again, rather than creating a new publication event state in the Presence Server.

4.8. Status Icon Handling

4.8.1. Presentity Side

The status icon shall be stored, updated, deleted and retrieved according to the OMA Presence and XDM 2.0 procedures. For the storage itself, the Presence Content XDMS as defined in [Presence_Content] shall be used including the application usage and document type that it introduces. RCS will only make use of the presence content XDMS for the storage of the status icon. Therefore the usage as defined in chapter 5.1.12.1 of [Presence_Content] is the only one that is applicable including all its associated restrictions. After storing, updating or deleting the icon, the presentity's client should publish an updated presence document including the etag attribute in the status-icon element as described in [Presence2.0_DDS] in chapters 7.11.1.3 and 7.20.

The icon and the icon document shall have following characteristics:

Document Name	rcs_status_icon
Icon aspect_ratio (width:height)	3:4 or 4:3
Icon maximum dimensions	240x320
Icon minimum dimensions	60x80
Icon file type	gif (both static and animated), jpeg or png as defined in [Presence_Content]
Document maximum size	200kB

Note: Fixing the icon document name will ensure that for RCS usage only a single icon is stored in the network and thus that no unnecessary resources are required for the storage of multiple icons. Without this, the situation could occur that multiple icons are stored without possibility to manage them after a switch to a new client. Furthermore the fixing of the icon name will allow clients that are aware of the SIP URI of their contact to build the URI needed for the retrieval of the icon even if the contact is offline.

Note2: 200kB is not a mandatory size. It is only defined as a maximum. Smaller sizes are acceptable and can on average even be expected.

The other parameters are fixed in order to allow the client implementations to know what to expect.

4.8.2. Watcher Side

The link to the status icon that is received in the presence document of the contact will be processed as described in [Presence2.0_TS] chapter 5.2.5.3. When the etag attribute of the status-icon element doesn't match that of the cached icon, the client will download the updated icon. For that it will handle the link that it received in the presence document as defined in [XDM2.0_Core] chapter 6.1.1.1 and more specifically the 3rd paragraph: it will replace the XCAP root part of the link with the own XCAP root of the watcher. After downloading the icon, the RCS client shall cache it along with the etag in order to be able to process future notifies on the

status of the contact as defined in [Presence2.0_TS] chapter 5.2.5.3.

4.8.3. Network Handling

Finally in the network the retrieval of the information referred to by the link to the status icon will be realized in an architecture as described in [XDM1.1_AD] with the addition of the Cross-Network Proxies and XDM-8 and NNI-1 interfaces defined in [XDM2.0_AD]. The required functionality of the Cross-Network Proxy is limited to the authorization, data transfer and routing of XCAP functionalities. The routing of search requests is not applicable to RCS. For RCS the supported protocols on the NNI-1 interface are limited to XCAP, “limited XQuery over HTTP” is not supported.

At the functionality level, this means that the identity provided by the Aggregation Proxy is not only shared on the XDM-4 and enabler specific reference points between the Aggregation Proxy and the Enabler specific XDMS as it is described in [XDM1.1_Core] chapter 6.4.1, but also on the XDM-8 and NNI-1 interfaces as it is described in [XDM2.0_Core] chapter 5.1.3. The Integrity and Confidentiality protection of [XDM1.1_Core] chapter 6.4.2 is extended to the NNI-1 interface as it is described in [XDM2.0_Core] chapter 5.1.4. Furthermore in addition to the functionality described in [XDM1.1_Core], the Aggregation Proxy shall route requests to the Cross-Network proxy as it is described in [XDM2.0_Core] chapter 6.3.1.1 and route the Cross-Network Proxy’s responses back to the XDM client. The procedures for routing requests to the search proxy that are described in [XDM2.0_Core] chapter 6.3.1.1 are not applicable for RCS. Finally the functionality of the Cross-Network Proxy as it is described in [XDM2.0_Core] chapter 6.5 and subchapters shall be supported with the exception of all functionality related to the routing of Search Requests and Search Responses.

4.9. Retrieval of Service Capabilities

4.9.1. General Overview

The service capabilities are realized using the Presence Data Model described in Chapter 4.2 except for the capability indication during a call which is realized using the SIP OPTIONS mechanism (described in Chapter 4.9.5).

Clients will retrieve the service capability information of contacts with whom they have not established a Social Presence relationship by means of anonymous (according to section 7.1 in [PRESENCE]) fetch operations (initial SUBSCRIBE requests with Expires: 0) which will result in a single NOTIFY request indicating the service capabilities of that contact. This information shall then be cached in the client. The trigger of a new fetch operation will depend on the client implementation, but it could for instance be done when the user opens the contact card or when a new contact is added. By receiving this indication of capabilities or an empty document, a client may highlight a 'subscribe' icon in order to bring the end-users attention towards the fact that the remote user may be subject for presence subscription.

4.9.2. Publication of the Services Capabilities at the Presentity

The service capability information that are object of a SIP PUBLISH by the RCS client (service tuple) correspond to the services supported by the device but may be restricted by some operator settings on the UE (on e.g. the services that are allowed by the operator in the network).

4.9.3. Operator Controlled Capability Handling

For an operator wanting or having to implement privacy restriction ("privacy sensitive network"):

1. The RCS rule for anonymous fetch of Presence Information is not set as described in Chapter 4.9.1 but is set to provide an empty document (at least telling the fetching terminal that the contact address supports Presence) as shown in Chapter 4.9.4.. Thus, for such an operator, only buddies of users can get the "capabilities" information (together with the Presence Social Information). Setting such a rule may be done by the client or enforced by operator policy in the network
2. The terminal of a user belonging to such an operator does not show the service capabilities of other users even though they are received by the fetch operation described in Chapter 4.9.1.

The behaviour described above is configurable in the terminal.

4.9.4. Presence Rule for Anonymous Fetch

Presence rule for anonymous fetch is as follows:

```
<!-- This rule allows no service capabilities to be sent for anonymous requests -->
<!-- in order to realize the service capabilities control requirement -->
<!-- This rule replaces the default "wp_prs_block_anonymous" rule -->
<!-- Note: May be modified to only allow RCS specified services -->
<cr:rule id="rcs_allow_services_anonymous">
  <cr:conditions>
    <ocp:anonymous-request/>
  </cr:conditions>
  <cr:actions>
    <pr:sub-handling>allow</pr:sub-handling>
  </cr:actions>
  <cr:transformations/>
</cr:rule>
```

4.9.5. Service Capabilities Query During a Call

In addition to publishing service capabilities via Presence as described in Chapter 4.2, RCS supports the service capability query during a CS voice call. This mechanism is applied for [VIDEOSHARE] and [IMAGESHARE] services used together with CS voice call and the service capability indication is shown in the Call UI.

Capability query is performed according to the [VIDEOSHARE] and [IMAGESHARE] specifications. After the CS call is set up, the capabilities of the other terminal are

queried to find out if the recipient is capable of supporting Video Share and/or Image Share session. This query is performed with the SIP OPTIONS method. A positive response to the query is sent using 200 OK and it contains also detailed information about supported media formats etc. Both UEs perform this query. A negative response to the content sharing (VS/IS) query or invite shall be sent using SIP 480 (temporary unavailable) when no voice call exists in the queried or invited terminal, and when a voice call exists but not with the querying/inviting party.

4.9.6. UI Related Aspects for Image Share and Video Share

Icons can be used in the terminal UI to show the user that a Video Share (or Image Share) session towards this particular recipient can be set up, in case the recipient indicates support for the Video Share service (or Image Share respectively).

Note: The goal is to ensure that users should not be proposed in the terminal UI to initiate a Video Share (or Image Share) session when the result from the capability query is not positive. Hence, the user experience is preserved.

4.10. XDM Document Management

XDM documents can be updated without the involvement of the RCS client of this RCS release. Two types of changes are possible:

1. On the one hand it can happen that shared lists are updated by adding new entries, removing entries or updating entries.
2. On the other hand though, there is a more difficult category of changes that may be done by another client: structural changes to the documents (e.g. to support new options in the presence authorization).

In the former case, in order not to overwrite changes done e.g. by another client, either a conditional update should be done (per XCAP conditional operations as defined in [RFC4825] section 7.11) or the client should retrieve the latest status of the document before doing the update. A RCS client of this RCS release shall support one of these options when updating XDM documents.

To deal with the latter case (structural changes to a XDM document) which could occur when a RCS client of this RCS release is deployed in a future RCS environment (even though the future RCS releases should be backward compatible with previous releases), the RCS client shall go to a read-only mode with regards to all XDM documents when it detects such changes. Future RCS versions will indicate this by renaming the “rcs” shared list. If the list is not renamed, but structural changes were detected in documents in the presence and RLS XDMS, the RCS client will go to read-only mode only for the updated documents. In that case the RCS client indicates to the user that (s)he should use a client with an updated RCS version to carry out commands that require to modify any of such documents.

To cover for situations in which the user downgrades from a future RCS release to the use of an RCS client only (e.g. the end-user does not have a client with an

updated RCS version or there is some blocked situation between the XDMC and XDMS), the RCS client shall offer to the user the possibility to remove all information stored in the XDMS's and then create new documents based on its current status and RCS release. The removal of the documents shall be based on a retrieval of the complete list of documents using XCAP Directory requests and then removing all listed documents (thus including documents unknown to the RCS client of this RCS release) using relevant operation such as XCAP PUT/DELETE.

5. ADDRESS BOOK

5.1. Enhanced Address Book

Enhanced Address Book (EAB) is a contact book application that makes the contacts a network service and enriches the contacts data provided by the Network Address Book (NAB) by integrating presence information.

EAB uses the SIMPLE presence data model defined in IETF and referenced by OMA Presence Simple 1.1 specification to provide presence and service capability information.

The service capability information for the presentity is retrieved from the presentity's presence document. The presence document contains a list of services that the presentity has.

How the RCS application (application's user interface) shows this information is up to the application. However in order for the different RCS applications to interwork there must be a consensus of how the presence document is formed and interpreted. Thus, the presence schema defined in [PRESENCE] is used as a base for the RCS service capability as described in the previous chapter.

The EAB can include a search function for yellow/white pages, corporate directories etc. This feature is based on normal browsing functionality utilizing a pre-configured URL for the search page plus vCard download.

5.2. Network Address Book

The RCS Network Address Book functionality is based on the synchronization using [OMADS] between the terminal address book and the Network Address Book. The additional functions include automatic backup & restore using [OMADS].

Note: Further details of common network address book are a study item for later releases.

6. CONTENT SHARING

6.1. Video Share

Video Share shall follow [VIDEOSHARE].

An RCS terminal might use the EAB in addition to sending OPTIONS to discover the other terminals Video Share capability before setting up the CS call.

The “already deployed terminals” option in [VIDEOSHARE] is not applicable in RCS.

6.2. Image Share

Image Share shall follow [IMAGESHARE]. Note that all RCS services using MSRP, including Image Share, shall align with MSRP usage as described in [IMENDORSE].

An RCS terminal might use the EAB in addition to sending OPTIONS to discover the other terminals Image Share capability before setting up the CS call.

Details for image format as specified in 3GPP TS 26.141 *IMS Messaging and Presence: Media Formats and codecs* will be followed.

7. FILE TRANSFER

File Transfer shall follow [SIMPLEIM] (using MSRP for file transport) as described in [IMENDORSE]. File Transfer is not linked to other services (e.g. CS-voice call) and can be used either during or outside of other communication sessions.

An RCS terminal might use the EAB to discover the other terminals File Transfer capability.

8. MESSAGING

8.1. Legacy Messaging

Legacy messaging is realized using existing SMS and MMS service. IM Pager Mode and IM Large Message Mode as of [SIMPLEIM] may be used for a future implementation of the SMS/MMS services for packet-only devices.

8.2. Chat

The RCS Chat service as defined in [FUNCDESC] is based on OMA SIMPLE IM Session mode. 1-to-1 chat shall use “One to One Session Mode messaging” and Group Chat the “Ad-Hoc Session Mode messaging” following [SIMPLEIM] as described in [IMENDORSE].

8.3. Other Messaging Functions

Conversational message view for messaging is an important feature of RCS. It is to be implemented in the terminal also for non-session based messaging types such as SMS and MMS.

Interworking between OMA SIMPLE IM based services and legacy services (SMS/MMS) is a study item for later Releases.

9. OTHER SERVICES

9.1. Multimedia CLI

MMCLI is a study item for later Releases.

APPENDIX A: ITEMS FOR FURTHER STUDY (INFORMATIVE)

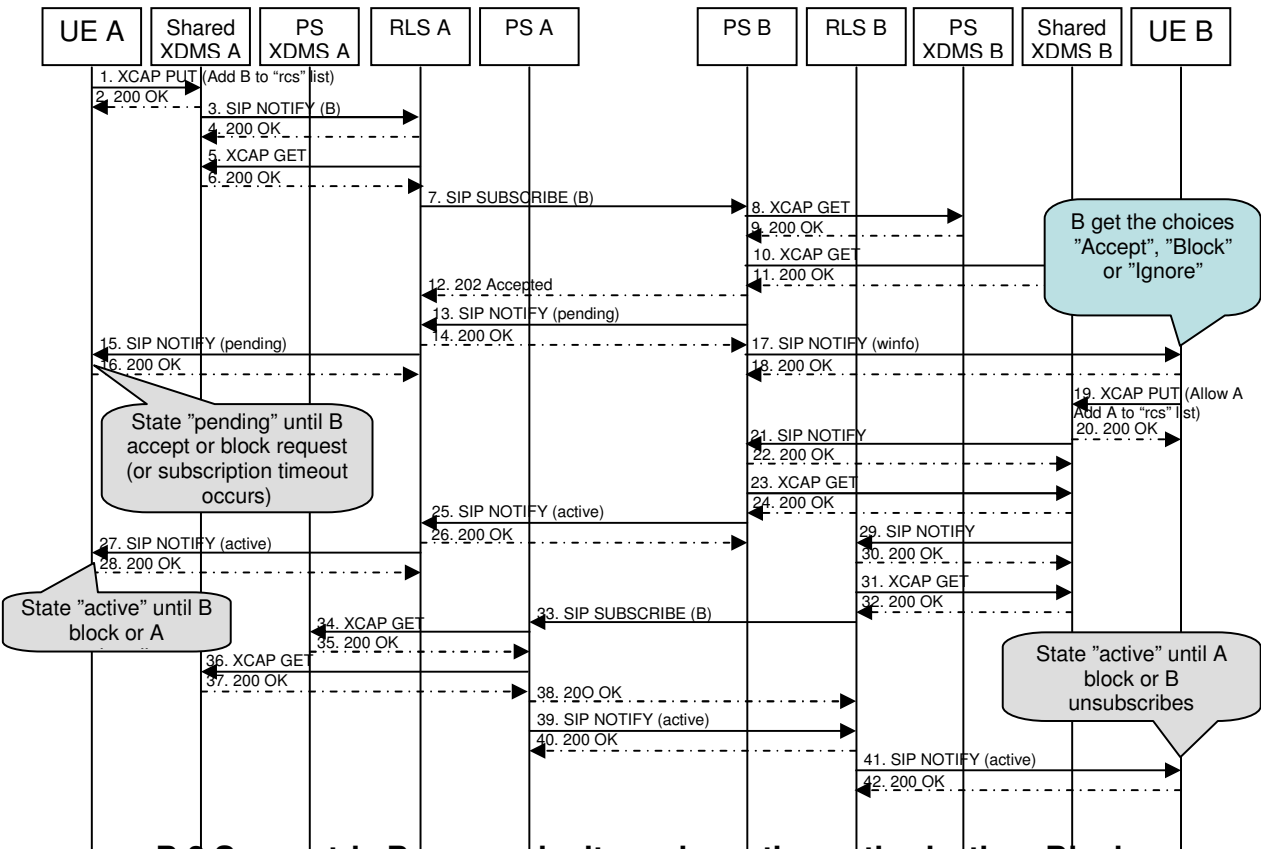
This document concentrates on RCS Release 1 technical realization, so certain features are left for further release(s). For the avoidance of doubt, this does *not* however imply in any way that these features are unimportant, but simply for the interest of time there is a need to limit the first release of RCS .

The following non-exhaustive list gives a high level view of potential items for the later releases of RCS development:

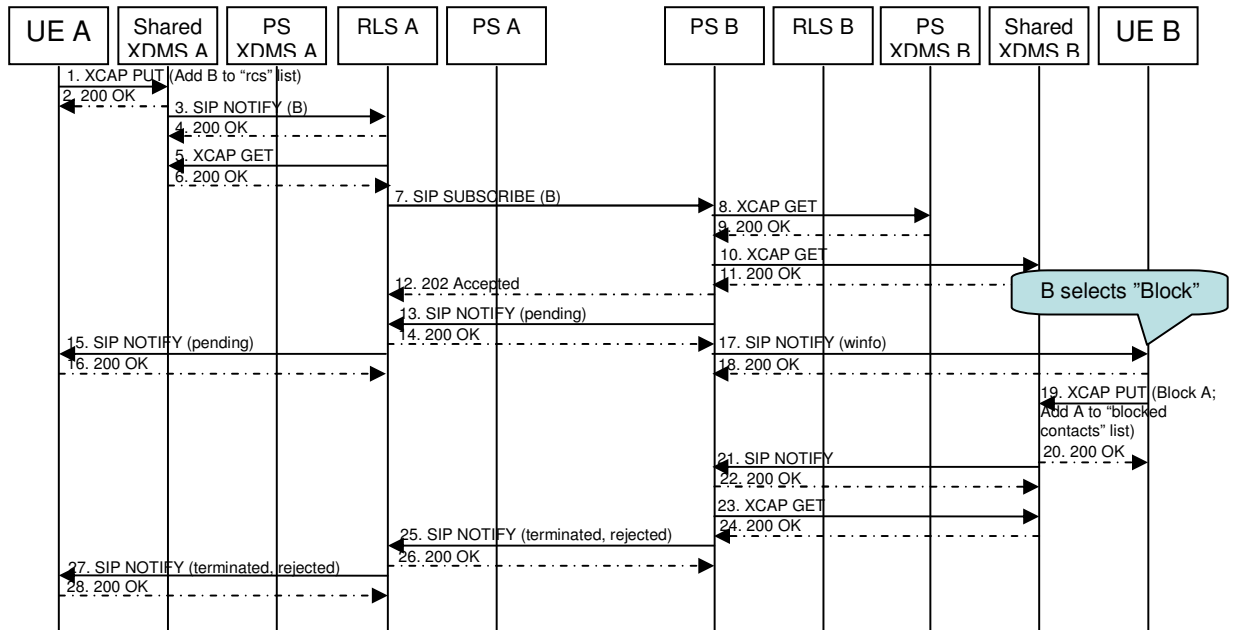
- Usage of RCS services from PC/fixed/broadband access
- Non-(U)SIM based authentication
- Details of network address book
- Presence / capability update optimization issues
- Presence Service Availability and Willingness parameters
- Full compliancy with OMA SIP/SIMPLE IM
- Network side messaging interworking
- Multimedia CLI
- Network based communication log

APPENDIX B: SIGNALLING SEQUENCES FOR PRESENCE SHARING (INFORMATIVE)

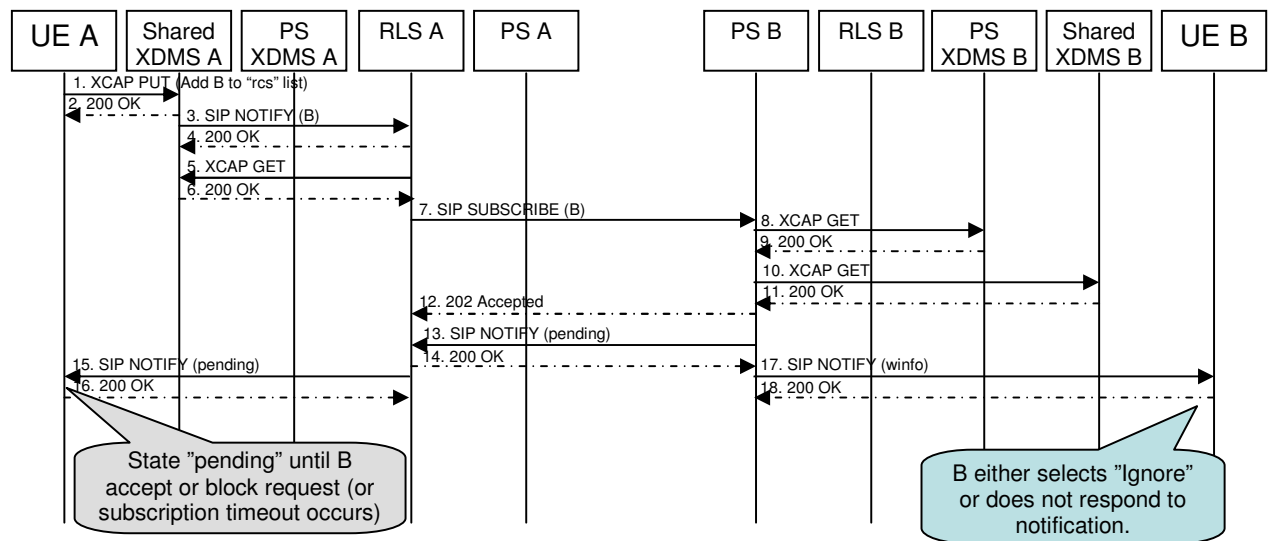
B.1 Symmetric Presence invite and reactive authorization, Accept



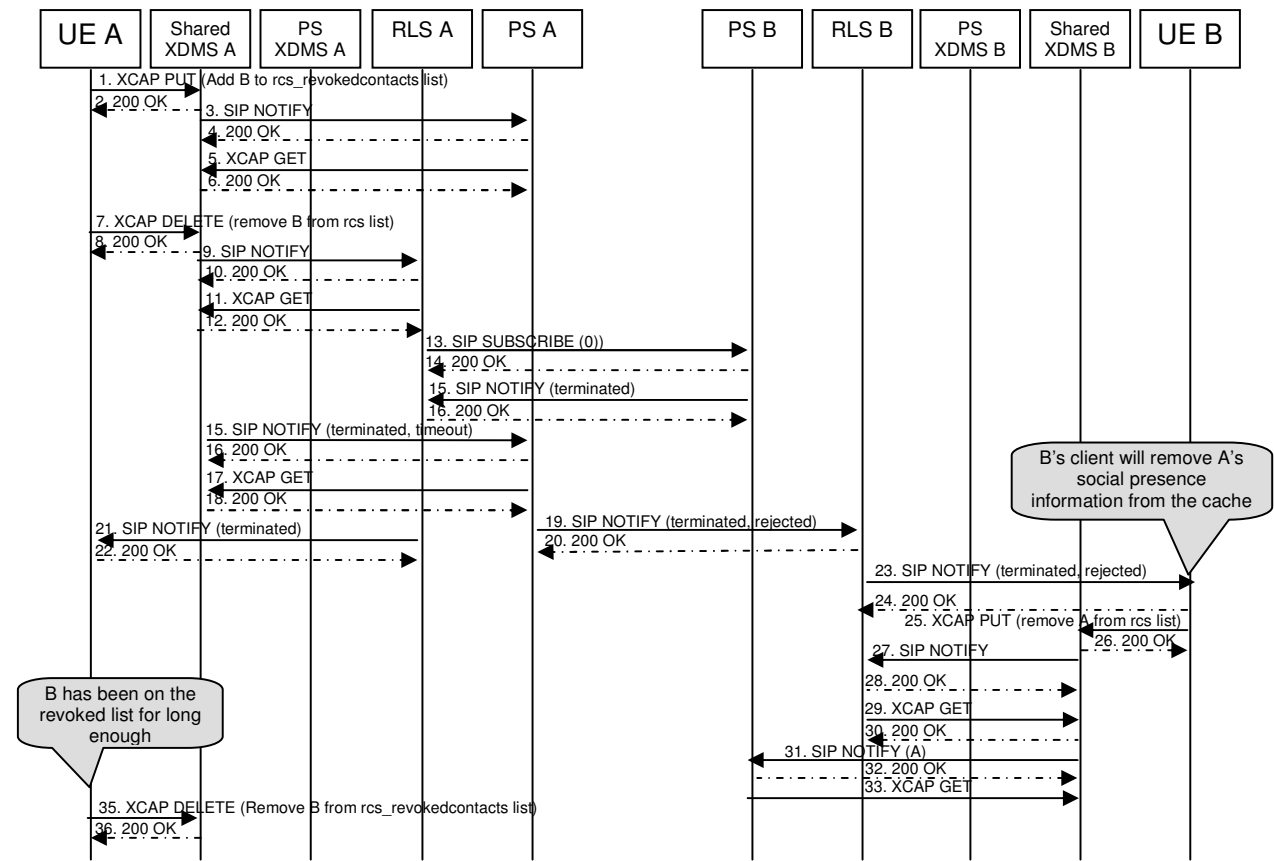
B.2 Symmetric Presence invite and reactive authorization, Block



B.3 Symmetric Presence invite and reactive authorization, Ignore/No Answer



B.4 Terminating a presence relationship using Revoke



DOCUMENT MANAGEMENT

Document History

Version	Date	Brief Description of Change	Approval Authority	Editor / Company
0.1	4 Dec 08	<p>First version using the official GSMA template. Document "RCS Tech Realization v1_021208" used as a basis, including the following CRs:</p> <ul style="list-style-type: none"> • NNI CR (Orange) • RLS CR (ALU) • Register clarification CR (Ericsson) • 2008-TR0002R02 • 2008-TR0014R2 • 2008-TR0015R2 • 2008-TR0016R1 • 2008-TR0017 • 2008-TR0018 • 2008-TR0019 • 2008-TR0020 • 2008-TR0025R2 • 2008-TR0026R4 • 2008-TR0027R3 • 2008-TR0028R1 • 2008-TR0032R1 • 2008-TR0034 • 2008-TR0035R1 • 2008-TR0036 • 2008-TR0037R2 • 2008-TR0039R3 • 2008-TR0041R3 • 2008-TR0043 	RCS Programme	Tero Jalkanen / TeliaSonera
0.2	15 Dec 08	Update based on comments received in Consistency Review	RCS Programme	Tero Jalkanen / TeliaSonera
0.3	16 Dec 08	Grammatical updates in preparation for GSMA QA for DAG approval	Mark Hogan	Mark Hogan/GSMA
1.0	20 Jan 08	Approved by DAG and EMC and updated version to v1.0	DAG & EMC	Mark Hogan/GSMA

Other Information

Type	Description
Document Owner	Rich Communication Suite Programme
Editor / Company	Tero Jalkanen / TeliaSonera